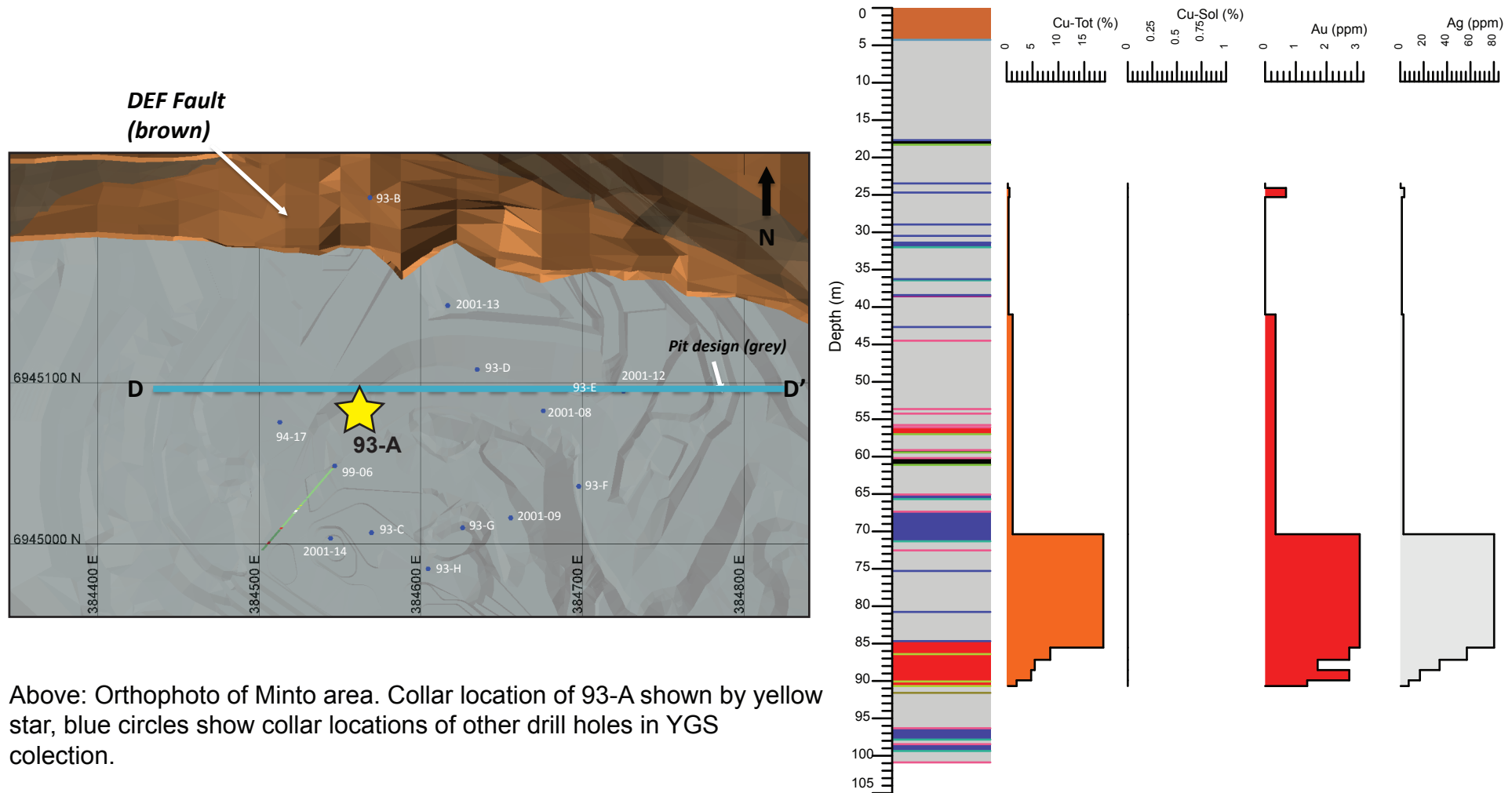


## Minto deposit (Yukon MINFILE 115I 021, 022)

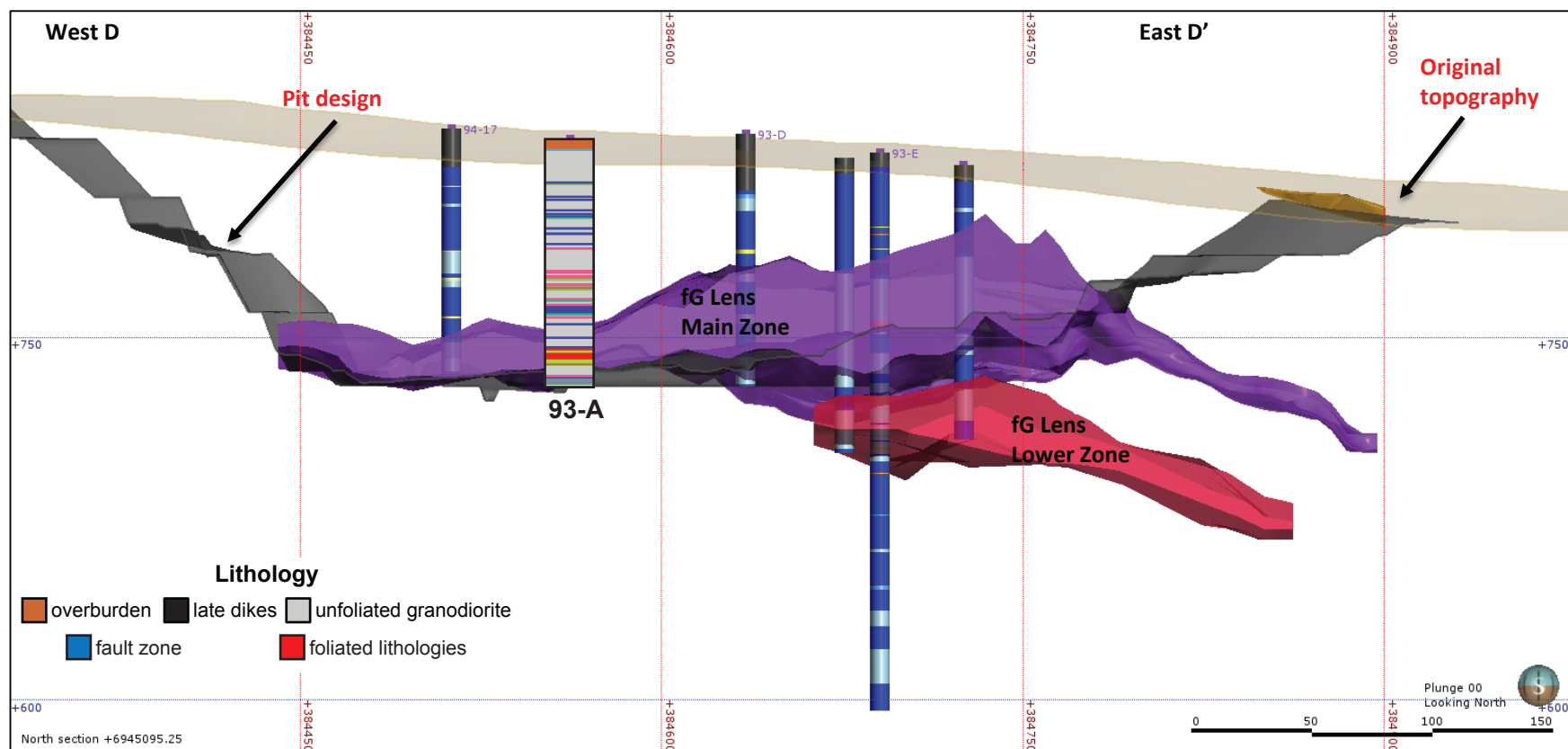
### Drill Hole: 93-A, Minto Main deposit

Area	Hole No.	Azimuth	Dip	Length (m)	Collar coordinates (NAD83, Zn 8)
Minto Main	93-A	0	-90	100.89	384562mE, 6945083mN



Above: Orthophoto of Minto area. Collar location of 93-A shown by yellow star, blue circles show collar locations of other drill holes in YGS collection.

Right: Simplified strip log with selected assays.



Above: Simplified vertical east-west cross-section through the Minto Main pit.

Right: Selected assays through Minto Main lower zone. Cu - Tot = sulphide and non-sulphide copper, Cu-Sol = non-sulphide copper

Hole	From (m)	To (m)	Interval (m)	Sample	Cu (%)	Cu-Sol (%)	Au (ppm)	Ag (ppm)
93-A	23.47	24.69	1.22	4593	0.2	0.0	0.0	0.3
93-A	24.69	25.91	1.22	4594	0.5	0.0	0.7	3.4
93-A	25.91	28.96	3.05	4595	0.4	0.0	0.0	1.4
93-A	56.08	57	0.92	4596	1.2	0.0	0.3	2.7
93-A	84.67	86.41	1.74	4685	18.7	0.0	3.1	80.2
93-A	86.41	87.93	1.52	4686	8.4	0.0	2.7	56.9
93-A	87.93	89.15	1.22	4687	5.4	0.0	1.7	33.6
93-A	89.15	90.68	1.53	4689	4.7	0.0	2.7	16.8
93-A	90.68	91.59	0.91	4690	1.9	0.0	1.4	7.2